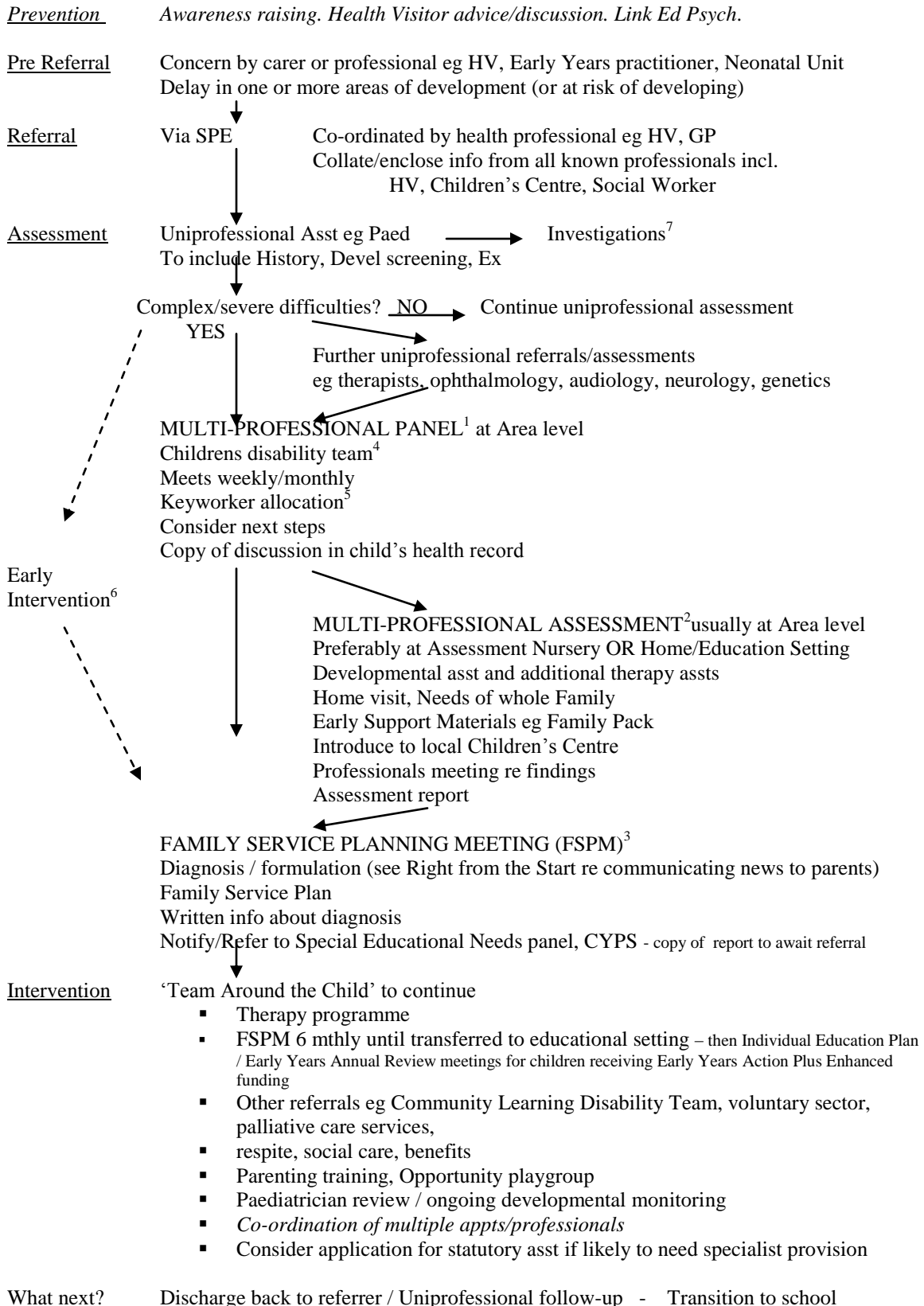


## Developmental Delay Pathway <5s



## **Notes to accompany Developmental Delay Pathway**

This pathway is not intended for isolated speech and language delay, or motor problems, or ASD. However there will be overlap with other pathways eg ASD, cerebral palsy.

Specific model of service may be different in each area according to make up of children's disability team, accommodation etc but will follow same overall pathway (Further service model recommendations to be made by Childrens Disability Service Model Group).

### **1. MULTI-PROFESSIONAL PANEL:**

This meeting is monthly in Frenchay Childrens Centre (FCC) and Ilminster Ave Childrens Centre (IACC) and Tyndalls Park Childrens Centre (TPCC), and weekly in Westgate House (WGH), with various different professionals attending.

### **2. MULTI-PROFESSIONAL ASSESSMENT:**

- FCC and IACC have a purpose built assessment nursery where approx 24 children/year attend for a 6 week assessment block for multi-professional assessment followed by a detailed report. Children who are less complex, or not able to attend assessment nursery, have a series of assessments (sometimes joint appointments) by paed, therapist, nursery nurse etc, followed by discussion re diagnosis, intervention.
- WGH do multi-professional assessments with children at home or in nursery setting and produce a joint report written over several weeks.

### **3. FAMILY SERVICE PLANNING MEETING:**

Many children will be seen by the whole team together at a Family Service Planning Meeting or Review – this completes the assessment phase (in many cases) and sets goals. WGH have well-established admin support for co-ordinating and writing FSPs. Early Support materials are used to document the Family Service Plan.

### **4. Children's Disability Team – Professionals involved in this vary in different areas – All Areas have Paed, SALT, Physio, OT, Disabled Children's Team Social Worker**

- FCC has an Educational Psychologist as part of assessment team and Nursery Nurses to run the assessment nursery.
- TPCC have Inclusion Nursery Nurses who take lead in planning assessments, and offer play sessions pre- and post-assessment, and contribute to report writing.
- Admin support to the Children's Disability team is essential to this pathway.

### **5. Key working:** This is integral but beyond the scope of this pathway and is being reviewed by CCHP. Some areas/professional groups are able to offer key workers but this is not a uniform provision.

### **6. Early Intervention:** Play sessions, parenting support, groups, information – to be offered in parallel to assessment process.

### **7. Investigations:** at discretion of paediatrician with reference to:

L McDonald, A Rennie, J Tolmie, P Galloway and R McWilliam. Investigation of global developmental delay. Arch Dis Child. 2006;91:701-705

**National Guidance:**

- National Service Framework for Children, Young People and Maternity Services: Disabled children and young people and those with complex health needs
- Early Support Programme  
<http://www.dcsf.gov.uk/everychildrenmatters/healthandwellbeing/ahdc/earlysupport/home/>
- TOGETHER FROM THE START - Practical guidance for professionals working with disabled children (birth to third birthday) and their families [www.dfes.gov.uk](http://www.dfes.gov.uk)
- Right from the Start – a national project which has influenced government and professional practice in the sharing of news with parents of their child's disability [rightfromthestart.org.uk](http://rightfromthestart.org.uk)