

# SPECIALIST SERVICE FOR CHILDREN WITH MODERATE TO SEVERE LEARNING DISABILITIES (SSCLD) CARE PATHWAY FOR CHILDREN AND YOUNG PEOPLE WITH COMPLEX EMOTIONAL, BEHAVIOURAL AND MENTAL HEALTH DIFFICULTIES

## PRE REFERRAL

GPs, school staff, social workers, paediatricians and other community child health professionals should: -

- Try initial behavioural interventions
- Consider accessing parent support group
- Consult SSCLD for advice and support in delivering simple interventions at Tier 1

Initial interventions ineffective.

Professional makes a referral:

Professional working with the child and family collects information needed for referral to SSCLD: -

- Obtain consent for referral from parent/guardian and young person if appropriate
- Consider whether safeguarding issues need addressing before or alongside referral
- Check child meets criteria for referral to SSCLD (*Hyperlink*)
- Complete Single Point of Entry referral form
- On referral form outline previous interventions tried, with outcomes
- Outline child and family's current goals for treatment

**Ongoing support** for child and family by GP, school staff, social workers, paediatricians and other community child health professionals

## REFERRAL RECEIVED

Client discussed at SSCLD team meeting. Are criteria met?

**No -  
Inappropriate  
referral**

Reason for not accepting referral explained to referrer and parent by letter

Referrer and parent given information about alternative services that may meet the child's needs

**Discharge**

**Yes -  
Appropriate  
referral**

SSCLD and joint discussion/working as necessary with child and family then agree entry into CAMHS or SSCLD care pathway or discharge

**Enter  
SSCLD Care Pathway**

**Maybe -  
Unclear  
referral**

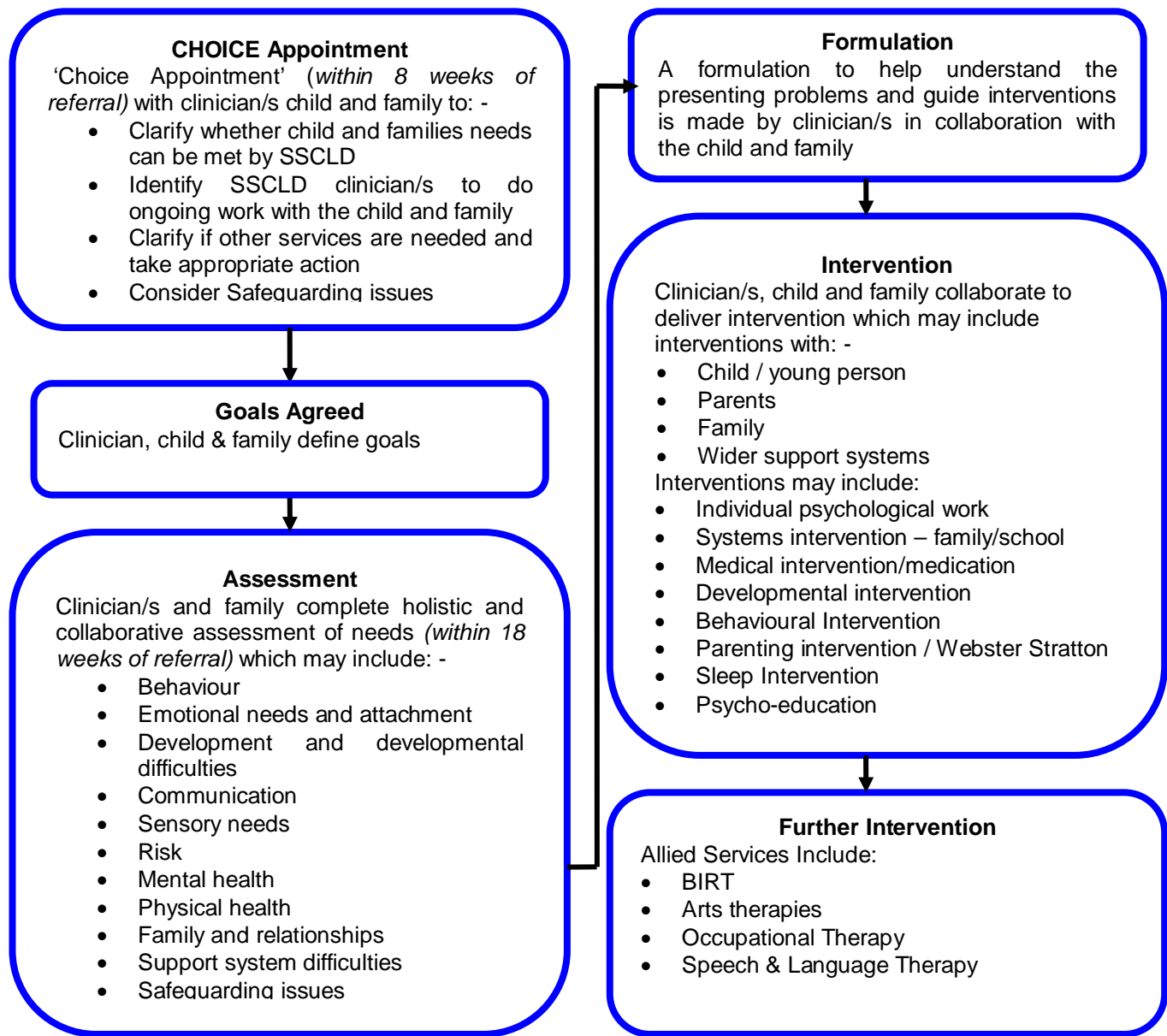
Unclear if meets SSCLD or CAMHS criteria

More information needed from referrer

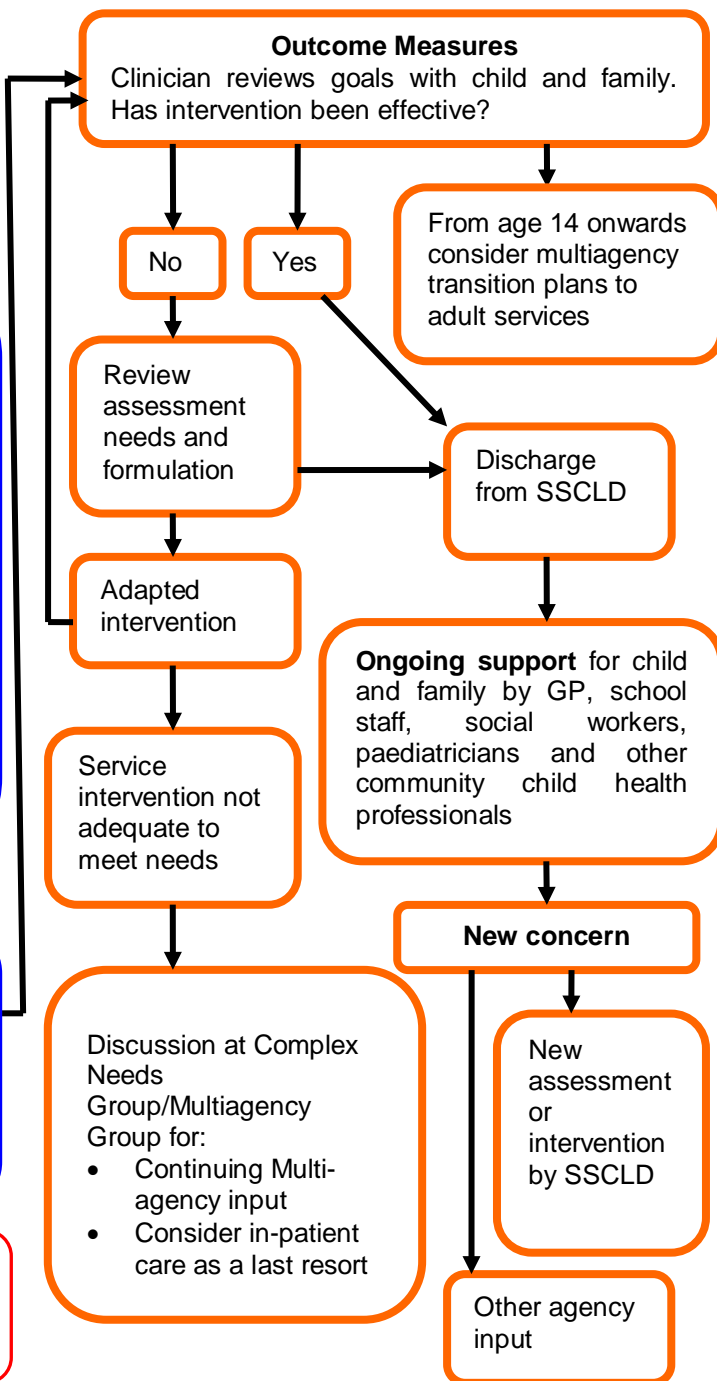
Letter to referrer asking for more information and re-referral

**Enter CAMHS  
Care Pathway**

## ASSESSMENT and INTERVENTION



## WHAT NEXT?



**References;** Developing Mental Health Services for Children and Adolescents with Learning Disabilities. A Toolkit for Clinicians. Sarah Bernard and Jeremy Turk. RCPsych Publications in collaboration with the National CAMHS Support Service 2009  
 A Mental Health Care Pathway for Children and Young People with Learning Disabilities. A Resource Pack for Service Planners and Practitioners. Helen Pote and David Goodban. CAMHS Publications 2007  
 Development of a Service Model and Care Pathway for Children and Young People with Learning Disabilities and Mental Health Needs in Bristol. The Children's Consultancy Network. March 2008